



THE BRUNSWICK BILLIARDS COLLECTION





BRUNSWICK BILLIARDS

WHERE FAMILY TIME AND QUALITY TIME MEET



In 1845, John Moses Brunswick set out to build the world's best billiards tables. Applying his formidable craftsmanship, a mind for innovation, boundless energy, and a passion for the game, he created a table and a company whose philosophy of quality and consistency would set the standard for billiard table excellence.

Even more impressive, he figured how to bring families together. And keep them that way.

That's because Brunswick Billiards tables — the choice of presidents and sports heroes, celebrities, and captains of industry for nearly 170 years — have proven just as popular with moms and dads, children and teens, friends and family. Bring a Brunswick into your home and you have a universally-loved game that all ages will enjoy, and a natural place to gather, laugh, share, and enjoy each other's company.

When you buy a Brunswick, you're getting more than an outstanding billiards table. You're getting a chance to make strong and lasting connections, now and for generations to come.

Connecting Generations through Superior Craftsmanship and Innovation Since 1845

BRUNSWICK

A PREMIER FAMILY OF BRANDS

It only takes one word to explain why all Brunswick brands are a cut above the rest, quality. We design and build high quality lifestyle products that improve and add to the quality of life of our customers. Our industry-leading products are found on the water, in recreational centers, at fitness centers, and in homes in more than 130 countries around the globe. Brunswick Billiards is our cornerstone brand in this premier family of brands in the marine, fitness, and billiards industries.

LifeFitness

BOSTON
WHALER

HARRIS

**HAMMER
STRENGTH**

 **MERCURY**

BAYLINER
SO WORTH IT!

 **CRESTLINER**

SeaRay



TABLE OF CONTENTS

POOL TABLES

BRUNSWICK POOL TABLES

BRIXTON | PG. 6

MERRIMACK | PG. 7

SAVANNA | PG. 8

PARK FALLS | PG. 9

MACKENZIE | PG. 10

TREVISIO | PG. 11

NEWBURY | PGS. 12-13

GLENWOOD | PGS. 14-15

CENTURION | PG. 16

CONTENDER POOL TABLES

ACTON | PG. 27

ALLENTON | PG. 28

BAYFIELD | PG. 28

BLACK WOLF II | PG. 29

METRO | PG. 17

GOLD CROWN V | PGS. 18-19

WESTCOTT | PG. 20

BRIDGEPORT | PG. 21

ASHBEE | PG. 22

WINDSOR | PG. 23

EXPOSITION

NOVELTY | PG. 24

ISABELLA | PG. 25

OAKLAND | PG. 29

SUTTON | PG. 30

TREMONT | PG. 30

GAMES, FURNITURE, AND ACCESSORIES

BILLIARD CLOTH | PG. 31

BILLIARD CUES | PGS. 32-35

CUE RACKS | PGS. 36-37

SHUFFLEBOARD | PGS. 38-41

TABLE TENNIS | PGS. 42-43

AIR HOCKEY | PG. 44

FOOSBALL | PG. 45

DARTBOARD CABINET | PG. 46

SHUFFLEBOARD

BOWLING PIN | PG. 46

GAME TABLES

AND CHAIRS | PGS. 47-49

BAR | PGS. 49

BAR STOOLS | PG. 50

PUB TABLES | PG. 51

PUB SHELVES | PG. 52

PLAYER'S CHAIRS | PG. 53

POOL TABLE

DINING TOP | PG. 54

POOL TABLE COVER | PG. 54

**TABLE TENNIS CONVERSION
TOPS AND CADDY** | PG. 55

ACCESSORIES | PGS. 56-57, 59

PLAY PACKAGES | PG. 58

BILLIARD BALLS | PG. 59

BRIGHT PINK® | pg. 60





BRUNSWICK POOL TABLES

Masterpieces of craftsmanship, design, and innovation, today's Brunswick tables continue the legacy of excellence begun almost two centuries ago.





Shown in Beachwood



BRIXTON™

SPECIFICATIONS

TABLE SIZES: 8' and 9'

FINISH OPTIONS:



Beachwood



Driftwood

POCKET OPTION: Enclosed pocket

LEG OPTION: As shown

FEATURES



Shown in Beachwood



Shown in Driftwood

- Sleek, contemporary design
- Hammered metal detail
- Unique antiqued finish

CUE RACK



Brixton™ Wall Cue Rack



As Seen On HGTV'S
PROPERTY BROTHERS!



MERRIMACK™

Shown in Nutmeg



Contemporary Style

Old World craftsmanship meets velvet-smooth play, courtesy of our Merrimack table. This classic design features hand-hammered metal hardware and distinctive artisan joinery — the ideal complement to a handsome, hand-rubbed antique finish that showcases the natural knots, grain, and texture of the table's rough-hewn wood. These rugged and rustic qualities provide a perfect contrast to the precision, stability, and playability built into each table. It's quality and style you can see, feel, and enjoy — inside and out.

SPECIFICATIONS

TABLE SIZES: 8' and 9'

FINISH OPTIONS:



Nutmeg



Driftwood

POCKET OPTION: As shown

LEG OPTION: As shown

FEATURES



- Rustic iron hardware
- Artisan joinery throughout
- Unique antiqued finish

CUE RACK



Merrimack™ Wall Cue Rack in Nutmeg
(Also available in Driftwood)



SAVANNA™

Shown in Prairie with Closed Pedestal Leg



Contemporary Style

A contemporary cottage style table, the Savanna features a rustic finish that highlights the natural texture of the wood. Hammered metal sights accent the look. The option of an open or closed pedestal allows for a choice between a more finished or a casual look to suit your home.

SPECIFICATIONS

TABLE SIZES: 8' and 9'

FINISH OPTION:



Prairie

POCKET OPTION: Enclosed pocket

LEG OPTIONS:



Open Pedestal



Closed Pedestal

FEATURES



- Hammered metal rail sights
- Rustic natural wood texture finish

CUE RACK



Savanna™ Wall Cue Rack



PARK FALLS™



Casual Style

Refined style meets rustic materials in the Park Falls — a unique table that's in line with the trends, yet blends with a wide range of room settings. Hand-selected pine is given a distressed finish, so no two tables look exactly alike. Details include antique black metal diamond-shaped rail sights. Matching cue rack in antique pine is both a beautiful and functional accessory.

SPECIFICATIONS

TABLE SIZE: 8'

FINISH OPTION:



Antique Pine

POCKET OPTION: Enclosed pocket

LEG OPTION: As shown

FEATURES



- Hand-selected pine
- Antique black metal diamond-shaped rail sights

CUE RACK



Park Falls™ Wall Cue Rack



MACKENZIE™



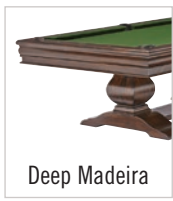
Contemporary Style

A dramatic double pedestal lends a contemporary look to a traditional design. The slightly distressed finish, mother-of-pearl rail sights, and graceful sweeping lines of the aprons give this table an artistic style that is fashioned to last.

SPECIFICATIONS

TABLE SIZES: 8' and 9'

FINISH OPTION:



Deep Madeira

POCKET OPTION: Enclosed pocket

LEG OPTION: As shown

FEATURES



- Mother-of-pearl rail sights
- Unique double pedestal legs

CUE RACK



MacKenzie™ Wall Cue Rack

Featured on
TV

As Seen On HGTV'S
PROPERTY BROTHERS!



TREVISO™



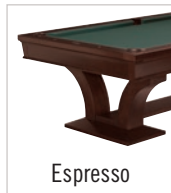
Contemporary Style

Beautifully arched legs, a unique silhouette and stylishly rich espresso finish turn the Treviso into a classic-contemporary work of art. But this dramatically different table is no museum piece to be admired simply for its design. It also exhibits Brunswick's superior construction, quality craftsmanship, and exceptional playability.

SPECIFICATIONS

TABLE SIZES: 8' and 9'

FINISH OPTION:



Espresso

POCKET OPTION: Enclosed pocket

LEG OPTION: As shown

FEATURES



Unique silhouette and arched legs

CUE RACK



Treviso™ Wall Cue Rack



NEWBURY™



Casual Style

This table is beautifully detailed in every way with exquisite custom features like parquetry inlaid solid mahogany, hammered metal accents, and steer horn diamond-shaped sights. Its elegant, hand-distressed finish gives it that classic, old world look on the outside, but inside we've utilized the most advanced design innovations to create a table that provides a level of playability that is simply unmatched.

The Newbury pool table is part of our exquisite Newbury Collection, which also includes the Newbury shuffleboard table, game table, and game chair—everything you need to make your game room the number one entertainment destination for the entire family.

SPECIFICATIONS

TABLE SIZE: 9'

FINISH OPTION:



Antique Distressed

POCKET OPTION: Enclosed pocket

LEG OPTION: As shown

FEATURES



- Custom iron hardware
- Hand-crafted herringbone detail
- Intricate rail sights

CUE RACK



Newbury™ Wall Cue Rack



THE NEWBURY COLLECTION

EVERYTHING YOU NEED TO COMPLETE YOUR GAME ROOM!

Brunswick Billiards is proud to offer several custom-crafted pieces in addition to the Newbury billiard table as part of our exquisite Newbury Collection.

Newbury™ Game Table: Featured design elements include handcrafted herringbone detail, antique distressed finish, custom iron hardware, and a table center of top grain buffalo hide. See page 47 for additional details.

Newbury™ Game Chairs: Featured design elements include a comfortable wide seat covered in supple European snuff top grain cow hide, handcrafted herringbone pattern, hand-distressed finish, custom iron hardware, and upholstery tack detail. See page 47 for additional details.

Newbury™ Shuffleboard: Available in a 16' size, the antique distressed finish, handcrafted herringbone detail, and vintage steel and verdigris brass hardware put the Newbury in a class all its own. See page 41 for additional details.

Newbury™ Wall Cue Rack: With its matching finish and design accents, this cue rack is a perfect complement to the Newbury collection pieces and is designed to hold up to 7 cues and a bridge stick.





GLENWOOD™

Shown in Chestnut with Round Legs



Traditional Style

A traditional table with modern sensibilities, the Glenwood is a graceful addition to any home. Plus, have it your own way with Brunswick's most versatile model. This fully customizable table offers a wide variety of table finishes, leg styles, cloth, and pocket styles. Design the perfect solid wood table for your home at an affordable price. The Glenwood has it all.

SPECIFICATIONS

TABLE SIZES:

7' available in Chestnut and Espresso

8' available in Chestnut, Espresso, Traditional Cherry, Two-tone Matte Black/Chestnut, and Old World Cherry

9' available in Chestnut, Espresso, and Traditional Cherry

*Available with Fringe Pocket and Ball and Claw leg only

POCKET OPTIONS:



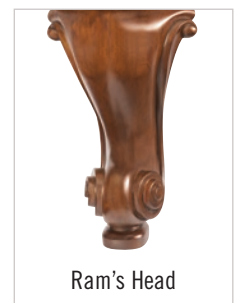
LEG OPTIONS



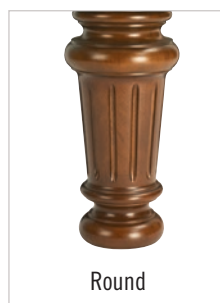
Ball and Claw



Queen Anne



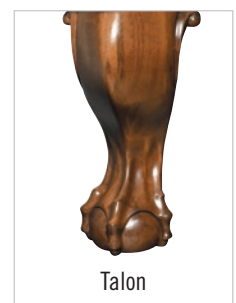
Ram's Head



Round



Tapered



Talon

➔ See page 36-37 for a variety of cue racks.

GLENWOOD FINISH OPTIONS



Chestnut
(Shown with Tapered Leg,
Fringe Pocket, and Merlot Cloth)



Chestnut
(Shown with Ram's Head Leg,
Shield Pocket, and Midnight
Blue Cloth)



Traditional Cherry
(Shown with Round Leg, Fringe
Pocket, and Sahara Cloth)

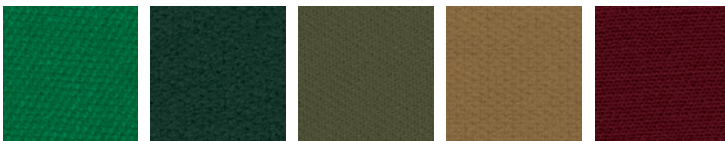


Espresso
(Shown with Queen Anne Leg,
Shield Pocket, and Olive Cloth)



Two-tone Matte Black/Chestnut
(Available only with Talon Leg. Shown with
Ebony Cloth and Shield Pocket)

CLOTH OPTIONS



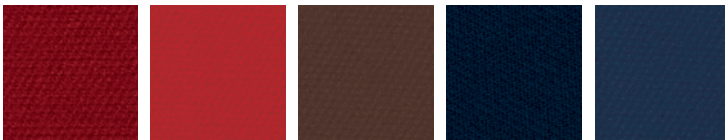
Brunswick
Green™

Timberline

Olive

Sahara

Merlot



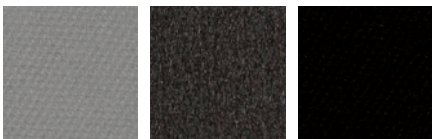
McIntosh

Cardinal
Red

Chocolate
Brown

Midnight
Blue

Regatta
Blue



Gun Metal
Grey

Charcoal Grey

Ebony





CENTURION™

Shown in Matte Black



Competition Style

The Centurion, a superb combination of streamlined styling and rigorous engineering standards, features attractive and sturdy pedestal-style legs, a leg stretcher, and foot levelers. This table is available in two finishes and two sizes. Gully return available. Our competition style Gold Crown wall rack is available in black and mahogany finishes which beautifully match the Centurion table.

SPECIFICATIONS

TABLE SIZES:

8' and 9' available in Matte Black
9' available in Mahogany

FINISH OPTIONS:



Matte Black



Mahogany

POCKET OPTIONS:

Drop pocket or gully return

LEG OPTION: As shown

FEATURES



Gully return available

CUE RACK



Gold Crown™ Wall Cue Rack
in Matte Black



METRO™

Contemporary Style

Metro's contemporary design, durability, craftsmanship, and precision make it a great choice for a billiard club or the home. Brushed aluminum accents enhance the look. Gully return available. Matching wall rack available, holds eight cues.

SPECIFICATIONS

TABLE SIZES: 8' and 9'

FINISH OPTION:



Black

POCKET OPTION: As shown

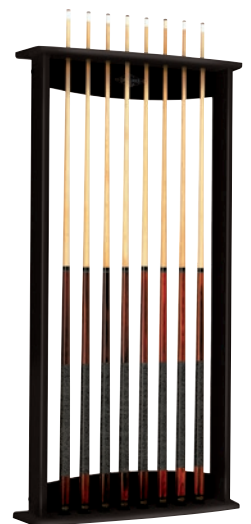
LEG OPTION: As shown

FEATURES



Gully return available

CUE RACK



Metro™ Wall Cue Rack

TOURNAMENT EDITION



Features longer rails and tighter pockets engineered to strict World Pool-Billiard Association specifications. Table decals included. Available in a nine-foot black version only.



GOLD CROWN™ V

Shown in Mahogany
with Nickel Trim



Competition Style

Since 1961, the Brunswick Gold Crown has reigned as the industry's best playing professional pool table. The Gold Crown V continues in this tradition with sophisticated new styling, while still maintaining its classic lines. Features include new corner castings, apron details, and a redesigned ball storage area, giving the Gold Crown V table a stronger, bolder appearance. Gully return available. A matching Gold Crown wall rack holds up to 12 cues.

GOLD CROWN V SPECIFICATIONS

TABLE SIZE: 9'

FINISH OPTIONS:



POCKET OPTIONS:

Drop pocket or gully return

LEG OPTION: As shown



GOLD CROWN V FEATURES



Lower receiver box included with gully return only

CUE RACK



Gold Crown™ Wall Cue Rack
in Mahogany



TOURNAMENT EDITION



The Gold Crown V Tournament Edition table features longer rails and tighter pockets engineered to strict World Pool-Billiard Association specifications. Table decals included. Available in a nine-foot mahogany with nickel trim version only.





WESTCOTT™

Shown in Chestnut



Traditional Style

An elegant, solid wood table, the Westcott features two hidden storage drawers. Perfect for keeping everything organized, it is also great where space is limited. One drawer is ready to hold up to five full-size cues and the other will hold all of your accessories including pocket balls, table brush, 8-ball and 9-ball racks, bridge, and shorty cue. Made of select hardwoods, features ball and claw legs, fringe pockets, and is available in two finishes.

SPECIFICATIONS

TABLE SIZES: 8' and 9'

FINISH OPTIONS:



Chestnut



Espresso



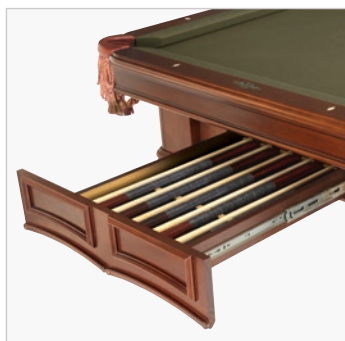
Old World Cherry*

*Available in 8' table size with Fringe Pocket only

POCKET OPTION: Fringe with tassel

LEG OPTION: Ball and claw

FEATURES



Two hidden storage drawers. One drawer is ready to hold up to five full-size cues and the other will hold all of your accessories including pocket balls, table brush, 8-ball and 9-ball racks, bridge, and shorty cue.



BRIDGEPORT™

Shown in Espresso



Transitional Style

From its luxurious finish to its distinctive legs and pockets, the Bridgeport is designed with true transitional spirit. It's a harmonic blend of styles that can be adapted to an individual's preference. Beauty and practicality are key aspects of the Bridgeport, and it's built to meet the demands of an active household. Optional drawers, perfect for organizing pool table cues and accessories, are also available.

SPECIFICATIONS

TABLE SIZE: 8'

FINISH OPTIONS:



Espresso



Chestnut

POCKET OPTION: Enclosed pocket

LEG OPTION: As shown

FEATURES



Optional storage drawers (one on each side of the table) are perfect for storing pool table cues and accessories. They hold all the contents of a Centennial™ Play Package.

➔ See page 36-37 for a variety of cue racks.



ASHBEE™



European Style

The intricately designed Ashbee is a return to Brunswick's heritage of inlaid tables dating to the 1870s. Distinctive, hand-inlaid details grace the aprons and sills of this exquisite table, available in a rich Espresso finish. To complement the Ashbee, a matching wall rack with unique geometric inlays also is available.

SPECIFICATIONS

TABLE SIZES: 8' and 9'

FINISH OPTION:



Espresso

POCKET OPTIONS:



Fringe with Tassel



Shield

LEG OPTION: Ashbee Tapered

FEATURES



Unique hand-inlaid details

CUE RACK



Ashbee™ Wall Cue Rack



WINDSOR™



European Style

The exquisite Windsor sets a new standard for tables of extraordinary beauty. Inspired by refined European designs, this table is gracefully adorned with hand-carved trestles and elegant mahogany inlays. A matching chestnut-finish cue rack is also available.

SPECIFICATIONS

TABLE SIZES: 8' and 9'

FINISH OPTION:



Chestnut

POCKET OPTION: Enclosed pocket

LEG OPTION: As shown

FEATURES



- Hand-carved trestles
- Elegant mahogany inlays

CUE RACK



Windsor™ Wall Cue Rack



EXPOSITION NOVELTY™

European Style

The Exposition Novelty table was originally introduced in 1878. With its superb workmanship, exquisite and elaborate inlays, and elegantly carved legs, it represented the contrast between the decade's sophisticated culture of innovation and the country's untamed West. Accordingly, this stately and detailed table was the judges' favorite of the age, winning gold medals in San Francisco and Cincinnati Expositions.

Brunswick Billiards revived the Exposition Novelty in a limited edition of 25 tables to celebrate and honor its 165th anniversary. Each table includes a limited edition matching cue rack and cue. This table's heritage design speaks to a bold era of art and culture in America and around the world. Its elegance finely represents how Brunswick has been connecting generations of billiard enthusiasts throughout its 165-year history.

SPECIFICATIONS

- TABLE SIZE:** 9' **FINISH OPTION:** Unique finish as shown
- POCKET OPTION:** Fringe with tassel **LEG OPTION:** As shown

FEATURES



Solid brass rosettes and intricate veneer inlay patterns add unique elegance to the Exposition Novelty

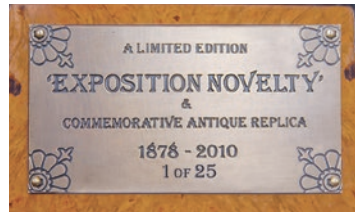


Table and cue rack feature a limited edition commemorative plaque

CUE RACK AND CUE



Matching limited edition wall cue rack and cue included with purchase



ISABELLA™

Shown in Unique Finish with Fossil Stone



SPECIFICATIONS

TABLE SIZE: 9'

FINISH OPTION: As shown

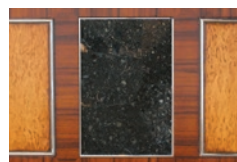
POCKET OPTION: Enclosed pocket

LEG OPTION: As shown

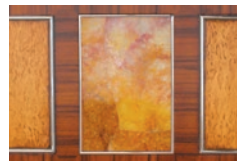
FEATURES



STONE OPTIONS

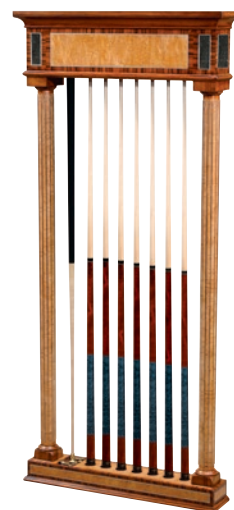


Fossil Stone



Yellow Stone

CUE RACK



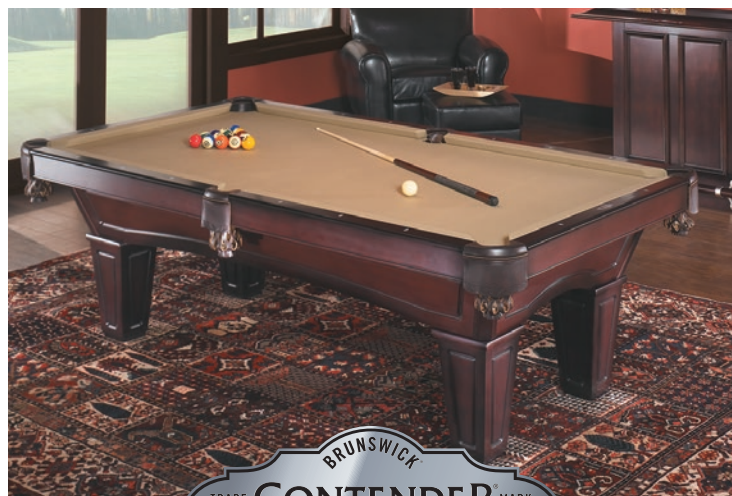
Matching Isabella™ wall cue rack included with purchase. Cue rack stone will match table's stone selection.

European Style

Inspired by Isabella of France, who married King Edward II of England, the Isabella by Brunswick brings history, royalty, and high society to mind. Its exquisite design elements echo the period's grand palaces and elaborate furniture incorporating exotic materials from around the world. Rare rosewood and Karelian birch, recognized for its rarity and enduring beauty, are used extensively throughout to highlight the timeless beauty of this modern tour de force. A matching Isabella cue rack is included with every Isabella table purchase. Due to the unique, high-end features on this table, the availability may vary over time.

CONTENDER® OR BRUNSWICK?

Understanding the Differences



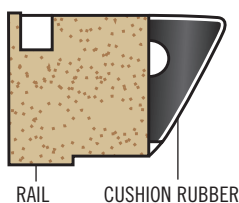
CONTENDER®



BRUNSWICK

The perfect starter table.

Contender® cushion rubber — unique Brunswick design for recreational play.



RAIL CUSHION RUBBER

MDF/plywood/solid wood construction — durable and strong.

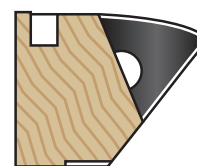
Nut and bolt assembly — quality fastening system for solid performance.

Pearlized rail sights — made of wear- and fade-resistant composite resin.

Leather or man-made leather pockets — providing options for the price-conscious shopper.

Beautiful tables offering heritage and craftsmanship.

SuperSpeed® cushion rubber — patented industry standard for over 70 years. Provides exceptional accuracy and consistency every time you play.



Solid wood — premium materials to last for generations.

Dovetail cross supports* — utilizing Old World construction methods for superior modern-day performance.

Mother-of-pearl rail sights* — genuine cultivated pearl material offers a beautiful contrast to the rail wood finish.

Genuine leather pockets — strong and durable while aging beautifully over time.

*Applies to most Brunswick brand tables.

*Connecting Generations through
Superior Craftsmanship and Innovation Since 1845*



CONTENDER® POOL TABLES

Brunswick CONTENDER tables fit your active lifestyle and are a great way to spend time with family and friends.



ACTON™

Shown in Chestnut

SPECIFICATIONS

TABLE SIZE: 8' | FINISH OPTIONS: Chestnut, Espresso | POCKET OPTION: Shield | LEG OPTION: Ball and claw



ALLENTON™

Shown in Traditional Cherry

SPECIFICATIONS

TABLE SIZES: 7' and 8' | **FINISH OPTIONS:** Chestnut, Espresso, Traditional Cherry | **POCKET OPTION:** Shield
LEG OPTIONS: Ball and claw, Tapered



BAYFIELD™

Shown in Matte Black

SPECIFICATIONS

TABLE SIZE: 8' | **FINISH OPTIONS:** Chestnut, Matte Black, Two-Tone Matte Black/Chestnut
POCKET OPTIONS: Fringe, Shield | **LEG OPTION:** As shown



BLACK WOLF™ II

Shown in Black

SPECIFICATIONS

TABLE SIZES: 7' and 8' | FINISH OPTION: Black | POCKET OPTIONS: Drop Pocket, Gully Return | LEG OPTION: As shown



OAKLAND™

Shown in Chestnut

SPECIFICATIONS

TABLE SIZE: 8' | FINISH OPTION: Chestnut | POCKET OPTIONS: Shield, Fringe | LEG OPTION: As Shown



SUTTON™

Shown in Espresso

SPECIFICATIONS

TABLE SIZES: 7' and 8' | FINISH OPTIONS: Chestnut, Espresso | POCKET OPTION: Shield | LEG OPTION: As shown



TREMONT™

Shown in Espresso

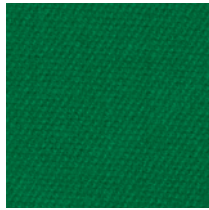
SPECIFICATIONS

TABLE SIZE: 8' | FINISH OPTIONS: Chestnut, Espresso | POCKET OPTION: Shield | LEG OPTION: Ball and claw

BILLIARD CLOTH

BRUNSWICK CENTENNIAL® CLOTH

- 100% luxurious Merino wool weave billiard cloth available in 13 colors to reflect your room's individual style.
- Centennial cloth does not pill or shed, maintaining a clean, sleek playing surface.



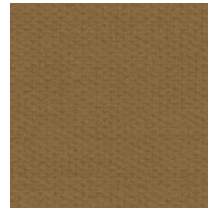
BRUNSWICK GREEN™



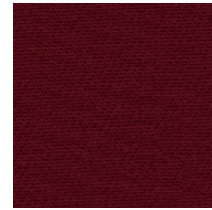
TIMBERLINE



OLIVE



SAHARA



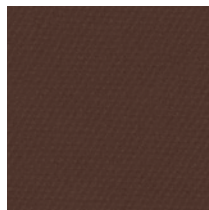
MERLOT



MCINTOSH



CARDINAL RED



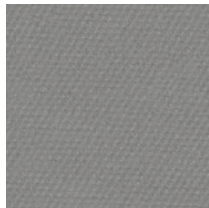
CHOCOLATE BROWN



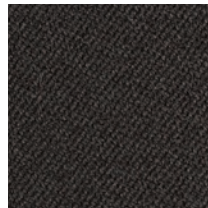
MIDNIGHT BLUE



REGATTA BLUE



GUN METAL GREY



CHARCOAL GREY



EBONY



DuPont™ Teflon® fabric protector* is incorporated into the cloth fibers, safeguarding the cloth and table from occasional spills and protecting your investment without affecting play.



*Teflon® is a registered trademark of DuPont used under license by Brunswick Billiards.

CONTENDER® SERIES WOOLEN CLOTH

- Woolen billiard cloth available in 13 colors to reflect your room's individual style.
- A 2500 lb. cylinder steams and presses the cloth to give it a harder finish ensuring little or no pilling and faster play.
- All of the wool is bleached before dyeing to provide a cleaner and more vibrant colored product.
- Exclusive shearing process provides the smoothest playing surface possible.



BRUNSWICK GREEN™



TIMBERLINE



OLIVE



SAHARA



MERLOT



MCINTOSH



CARDINAL RED



CHOCOLATE BROWN



MIDNIGHT BLUE



REGATTA BLUE



GUN METAL GREY



CHARCOAL GREY



EBONY

BILLIARD CUES



SMOKE SERIES Brunswick

CUE COLLECTION

A great quality two-piece cue for any recreational billiard enthusiast, the SMOKE SERIES Cue Collection by Brunswick Billiards is expertly weighted and balanced for smooth play and brilliant shots.



JH1 | Canadian Maple / Stainless Steel Joint



AR1 | North American Hard Rock Maple / Plated Metal Joint



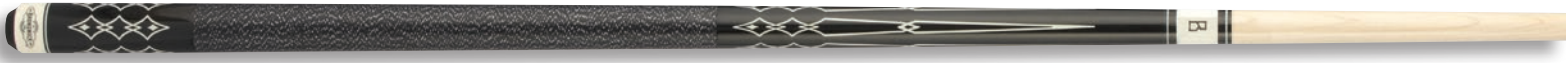
AR1-PINK | North American Hard Rock Maple / Plated Metal Joint



AR2 | North American Hard Rock Maple / Plated Metal Joint



SC1 | North American Hard Rock Maple / Plated Metal Joint



SC2 | North American Hard Rock Maple / Plated Metal Joint



SC2-PINK | North American Hard Rock Maple / Plated Metal Joint



TH1 | Canadian Maple / Stainless Steel Joint



SV1 | Canadian Maple / Stainless Steel Joint



JS1 | North American Hard Rock Maple / North American Birdseye Maple / Stainless Steel Joint



JS2 | North American Hard Rock Maple / North American Birdseye Maple / Stainless Steel Joint

BILLIARD CUES



FIRE SERIES
Brunswick
CUE COLLECTION

The FIRE SERIES Cue Collection by Brunswick Billiards features piloted joint two-piece construction, expertly weighted and balanced for smooth play and brilliant shots. By any definition, an exceptional series of cues.



LJ1 | Canadian Maple / Stainless Steel Uni-Loc Joint



DS1 | Canadian Maple / Stainless Steel Uni-Loc Joint



JB1 | North American Hard Rock Maple / Stainless Steel Uni-Loc Joint



JB2 | North American Hard Rock Maple / North American Birdseye Maple / Stainless Steel Uni-Loc Joint



KB1 | Canadian Maple / Curly Maple / Stainless Steel Uni-Loc Joint



JA1 | Canadian Maple / Stainless Steel Uni-Loc Joint



ME1 | Canadian Maple / Curly Maple / Stainless Steel Uni-Loc Joint



JL1 | Canadian Maple / Birdseye Maple / Stainless Steel Uni-Loc Joint

BILLIARD CUES



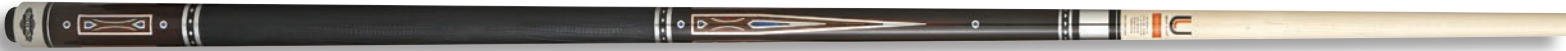
INFERNO SERIES Brunswick

CUE COLLECTION

Exhibiting meticulous craftsmanship, the INFERNO SERIES Cue Collection by Brunswick Billiards is constructed with Canadian Maple and stainless steel Uni-Loc joints. This first-class cue series makes a statement at any level of play.



EXPOSITION NOVELTY | This beautifully crafted, limited edition cue features elaborate inlay patterns mirroring the historical Exposition Novelty table's stunning design.



LASALLE | Defined by rich ebony with cherry brown wood, this cue is framed by brushed aluminum and accented with turquoise inlays.



CALUMET | A return to Brunswick's heritage of hand inlays, this cue's striking pattern features Bocote wood with aluminum, cocobolo, and turquoise inlays.



ISABELLA | Bringing history, royalty, and high society to mind, this cue is styled after the Isabella pool table, featuring brushed aluminum and blue gemstone inlays.



MONTROSE | A handsome and elegant cue graced by an ebony five-prong design with black and white inlays.



ARGYLE | Famous for a lustrous finish, Cocobolo tropical hardwoods blend with four-prong curly maple with black and silver inlays.



MARQUETTE | Inspired by the Romantic Era, this cue pairs with the breathtaking Marquette pool table and features five-prong Birdseye Maple, Cocobolo, and black inlays.



MONARCH | Styled after a lavishly designed Brunswick antique, the Monarch pool table, this remarkable cue features polished brass insets and a laser-engraved lion.



CHALLENGER | Exotic Purpleheart wood features an aluminum Art Deco inspired inlay. This top-of-the-line cue is modeled after our popular antique Challenger pool table.



MEDFORD | Sleek and smooth, this elegant cue's rich ebony six-prong inlay features beautiful Purpleheart wood with black and white acrylic.



LONGWOOD | A stylish refined cue, gracefully adorned by four-prong, diamond-shaped, spliced maple and cherry brown inlays.



NEWBURY | With polished fishbone detail and diamond-shaped, imitation ivory inlays, this cue is an impressive complement to the handsome Newbury pool table.

BILLIARD CUES

GOLD CROWN CUE COLLECTION



In celebration of the Gold Crown table's 50th Anniversary in 2011, Brunswick Billiards created a special series of limited-edition cues. Three styles of cues are offered, the premier—Model GC5—is numbered 1 to 500. All are worthy of the Gold Crown heritage and feature cutting edge technology and a laser engraved Brunswick logo.



GC1 | Gold Crown Anniversary Cue



GC3 | Gold Crown Anniversary Cue



GC5 | Gold Crown Anniversary Cue

BRUNSWICK CUE COLLECTION

Brunswick offers a range of cues for the billiards enthusiast. From the one-piece Tru-Balance™ cue to the top-quality Master Stroke™ cue, you are sure to find a cue to fit your needs.



Master Stroke™ Cue



Centennial® Cue



Heritage® Cue



Tru-Balance™ Cue

CUE RACKS

CENTENNIAL® CUE RACKS

All three Centennial cue racks are designed to hold the contents of the Centennial™ Play Package including the bridge stick and shorty cue, a full set of billiard balls, 8-ball rack, 9-ball rack, table brush, and chalk.



Shown in Chestnut



Shown in Chestnut



Shown in Espresso

BRUNSWICK CENTENNIAL® CORNER CUE RACK

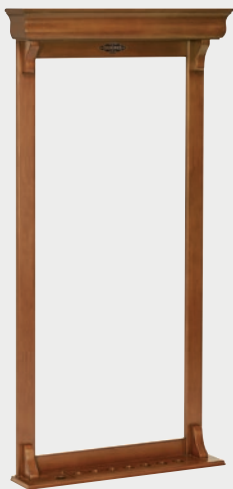
This unique space-saving corner cue rack holds up to eight cues. Available in chestnut and traditional cherry finishes. Free standing.

BRUNSWICK CENTENNIAL® WALL CUE RACK

Shorter in height, this rack will fit into even more room settings—61" H x 35" W. Features the standard Brunswick wall mounting system. Available in chestnut, espresso, and traditional cherry finishes.

BRUNSWICK CENTENNIAL® FLOOR CUE RACK

This free standing floor rack holds up to eight cues. Available in chestnut, espresso, traditional cherry, and Old World cherry finishes.



Shown in Chestnut



Shown in Chestnut



Shown in Matte Black

BRUNSWICK TRADITIONAL™ WALL CUE RACK

Simple styling and clean lines. Holds up to eight cues or seven cues and a bridge stick. Available in chestnut, espresso, traditional cherry, oak, and Old World cherry finishes.

GOLD CROWN WALL CUE RACK

Styled after the world class Gold Crown table, this rack holds up to 12 cues and is available in mahogany or black, matching the finishes of the Gold Crown table. Features the exclusive Brunswick mounting bracket system for fast, easy installation.

CONTENDER® FLOOR CUE RACK

This free-standing floor rack is the perfect solution for your billiard storage needs. Designed to hold up to eight cues, two ball racks, chalk, table brush, and additional accessories. Available in traditional cherry, chestnut, espresso, and matte black finishes.

CUE RACKS

WALL CUE RACKS

All Brunswick Billiards wall racks feature the exclusive Brunswick mounting bracket system for fast, easy installation.



ASHBEE™ WALL CUE RACK

Features European styling with unique geometric inlay shapes made of crotch mahogany on walnut with lines of ebony. Available in espresso finish, the rack holds up to eight cues.



BRIXTON™ WALL CUE RACK

The perfect complement to the Brixton pool table featuring the same antiqued finish, contemporary "X" design and hammered metal details. Holds up to eight cues or seven cues and a bridge stick. Available in beachwood (shown) or driftwood finish.



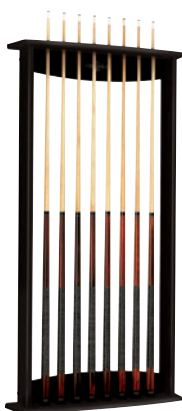
MACKENZIE™ WALL CUE RACK

A unique balance between traditional and contemporary styling, the MacKenzie wall cue rack is perfectly balanced with the stunning finish and profile of the MacKenzie pool table. Holds up to eight cues or seven cues and a bridge stick. Available in deep madeira finish.



MERRIMACK™ WALL CUE RACK

A perfect pair to the Merrimack pool table featuring the same hand-rubbed finish and adding the same distinct accents—artisan joinery and hammered metal hardware. Holds up to eight cues or seven cues and a bridge stick. Available in nutmeg (shown) or driftwood finish.



METRO™ WALL CUE RACK

Styled after the contemporary design of the Metro billiard table, the matching Metro wall cue rack holds up to eight cues. Available in black finish.



PARK FALLS™ WALL CUE RACK

With its antique pine finish, the Park Falls wall cue rack complements the Park Falls table beautifully and blends with a wide range of room settings. Holds up to eight cues or seven cues and a bridge stick. Available in antique pine finish.



SAVANNA™ WALL CUE RACK

Like the Savanna pool table, this matching cue rack has a cottage style design and rustic finish that brings the natural texture of the solid hardwood construction to life. This rack, with its arched top design, offers hints of old South hospitality. Holds up to eight cues or seven cues and a bridge stick. Available in prairie finish.



TREVISO™ WALL CUE RACK

A match to the Treviso pool table, this rack features an arch design and is available in espresso finish. Designed to hold the contents of the Centennial Play Package, this rack holds up to eight cues, a full set of billiard balls, 8-ball rack, 9-ball rack, table brush, and chalk. Available in espresso finish.



WINDSOR™ WALL CUE RACK

Gracefully adorned with hand-carved trestles and elegant mahogany inlays, the Windsor wall rack is inspired by the passionate refinement of classic European designs. The rack holds up to eight cues and is a beautiful complement to the extraordinary Windsor pool table. Available in chestnut finish.

SHUFFLEBOARD GAME TABLES

DELRAY™ SHUFFLEBOARD

If you take your fun seriously, the Delray is ready and waiting for you to bring your best game. This shuffleboard table features a streamlined, contemporary design with matte black finish, handsome silver metallic textured laminate corners, and a 16" wide/1.5" thick play surface of yellow poplar (protected with polymer resin and a lifetime warranty). Four open shelves (under the cabinet at the center of the table) provide ample storage for the included accessories (four black pucks, four red pucks, stainless abacus scorer, table brush, and shuffleboard wax). Optional scorer and light set (set of two) available.

TABLE SIZES: 12', 14'

FINISH OPTION: Matte Black



GUNNISON™ SHUFFLEBOARD

Professionals and amateurs alike will enjoy the play of the Gunnison. Its beautiful North American maple wood playfield with polymer resin surface is top of the line. Available in 14- and 16-foot sizes, the Gunnison features solid wood and wood veneers in a lush chestnut finish. With six climate adjusters, leg levelers, and a full complement of accessories (including four black pucks, four red pucks, stainless abacus scorer, table brush, and Shuffleboard wax) you will enjoy a lifetime of family fun. Optional scorer and light set (set of two) available.

TABLE SIZES: 14', 16'

FINISH OPTION: Chestnut



SHUFFLEBOARD GAME TABLES

ANDOVER™ SHUFFLEBOARD

Family-friendly fun begins with this classic shuffleboard table. Featuring a North American maple wood playfield and polymer resin surface, this table is exquisite in its playability and appearance. Available in 12- and 14-foot sizes with a contemporary chestnut or espresso finish. Features convenient storage shelves found at the center leg and accessories (including four black pucks, four red pucks, stainless abacus scorer, table brush, and shuffleboard wax), the Andover provides a unique visual complement to any home game room. Optional scorer and light set (set of two) available.

TABLE SIZES: 12', 14'

FINISH OPTIONS: Chestnut, Espresso



SHUFFLEBOARD SCORER AND LIGHT SET

This beautiful Brunswick-branded electronic scorer keeps your attention on the game. Spend your time setting up the next shot and leave the score to this accurate, easy to install unit. Straddles the table so players at each end know the score at a glance. Fits the Andover, Delray, and Gunnison shuffleboard tables.

Easy to install table lights keep the play surface illuminated no matter where you place your shuffleboard table. Sturdy steel construction with black finish will complement any surroundings. Set of two fits the Gunnison, Delray, and Andover shuffleboard tables.



SHUFFLEBOARD WAX

Designed to help maintain optimum playability, Brunswick's shuffleboard wax allows you to have perfect control of your game.



SHUFFLEBOARD GAME TABLES

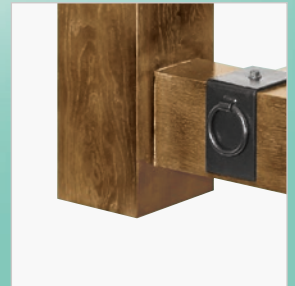
MERRIMACK™ SHUFFLEBOARD

No game room is truly complete without a shuffleboard table and the Merrimack (inspired by our Merrimack pool table) is so beautifully designed and built, it might just end up taking center stage. Expertly crafted, featuring a solid oak cabinet and maple hardwood play surface with polymer resin surface, the Merrimack combines Old World craftsmanship with the precise playability Brunswick is known for around the world. With seven different sizes available, from 9 foot to 22 foot, you can now choose a shuffleboard table that perfectly aligns with your skill level, decor and game room space.

TABLE SIZES:

9', 12', 14', 16', 18', 20', 22'

FINISH OPTIONS: Nutmeg



CHALLENGER™ SHUFFLEBOARD

The classics never go out of style. That's why we modeled this top of the line shuffleboard table after our popular antique Brunswick Challenger pool table. Both professionals and amateurs alike will appreciate the Challenger's impeccable playability, eye-catching good looks, and finely crafted details. Featuring a solid hardwood Art Deco design in a rich espresso finish and brushed stainless detailing, the Challenger is available in a broad range of sizes from 9 foot to 22 foot, ensuring that it will fit seamlessly in any size game room.

TABLE SIZES:

9', 12', 14', 16', 18', 20', 22'

FINISH OPTION: Espresso

SHUFFLEBOARD GAME TABLES



NEWBURY™ SHUFFLEBOARD

There's only one way to exceed everyone's expectations of what a game room should be, add the Newbury shuffleboard table. Available in a 16' size, the antique distressed finish, handcrafted herringbone detail, and vintage steel and verdigris brass hardware put the Newbury in a class all its own. Each table comes with complimentary accessories including 4 black pucks, 4 red pucks, stainless abacus scorer, table brush, and shuffleboard wax. For those with both a competitive spirit and distinctive taste, the Newbury raises the game of shuffleboard to an entirely different level.

The Newbury shuffleboard table is part of our exquisite Newbury Collection, which also includes the Newbury pool table, game table, and game chair — everything you need to make your game room the number one entertainment destination for the whole family.

TABLE SIZE: 16' | FINISH OPTION: Unique



TABLE TENNIS GAME TABLES



SMASH 1.0™ TABLE TENNIS

Features a black 15 mm-thick MDF playing surface, clip-on net, sturdy undercarriage and casters, and fold-up capability for easy storage.



SMASH 3.0™ TABLE TENNIS

A brilliant green playing surface with matching net and net clips helps Smash 3.0 stand out, both in appearance and performance. Featuring a 16 mm-thick playing field, sturdy undercarriage and casters, and fold-up capability for easy storage.



SMASH 5.0™ TABLE TENNIS

Our mid-range model features a handsome blue playing surface with matching net and net clips. With an 18 mm-thick playing field for great stability and even greater shots, an undercarriage and caster system designed for strength and mobility, and fold-up capability for easy storage.



TABLE TENNIS GAME TABLES



SMASH 1/0™ TABLE TENNIS

This versatile game table is designed for exceptional indoor or outdoor play. It features a vibrant blue 4 mm playing surface, clip-on net, sturdy undercarriage and casters, and fold-up capability for easy storage.



Includes two performance-quality rackets and three Brunswick balls with high control characteristics for consistent play and precision.



SMASH 7.0™ TABLE TENNIS

Our latest entry into the table tennis game is as powerful as its name. Smash 7.0 features a classic black or blue play surface, matching nets and net clips, with a sturdy 25 mm-thick playing field for every loop, flip and (of course) smash you make. A strong undercarriage ensures exceptional strength and stability, while the easy fold-up system makes moving and storage quick and convenient. Smash 7.0 is truly a force to be reckoned with, and the ideal table for any age and level of play.



Table tennis conversion tops are also available to maximize playability on your Air Hockey or billiard table! See page 55 for details.



CT7 Table Tennis Conversion Top



CT8 Table Tennis Conversion Top

AIR HOCKEY GAME TABLES

V-FORCE® AIR HOCKEY®

The hottest look in Air Hockey since Brunswick invented the game more than 30 years ago, the V-Force table rocks with state-of-the-art electronic scoring and exceptional speed of play. Cool black mallets are easy to control for precise shots on goals. Durable aluminum rails with powder-coated metal corners accelerate the action. Two mallets and four pucks included with each table kit. Available in seven-foot size.

See page 55 for details on maximizing playability on your Air Hockey table with our table tennis conversion top!



CT7 Table Tennis Conversion Top

WIND CHILL™ AIR HOCKEY

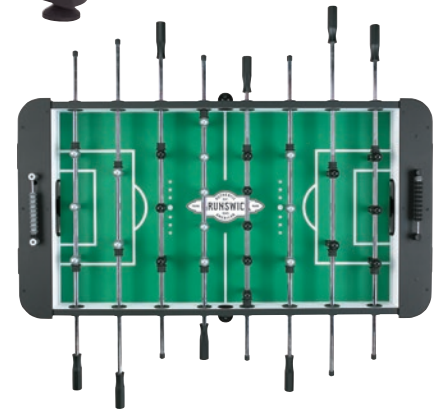
Add more fun to your game room with the Wind Chill Air Hockey table. Sleek contemporary styling on a sturdy pedestal base features dual abacus scorers and constant flow UL blower. Two mallets and four pucks included with each table kit. Available in seven-foot size.



FOOSBALL GAME TABLES

KICKER™ FOOSBALL

- Brunswick exclusive sturdy cabinet with a matte black finish
- Three-man goalie offers a wall of defense and incredibly fast play
- Adjustable leg levelers make installation and leveling easy on uneven floors
- Externally-attached cup holders secure refreshments away from the playing surface
- Dual-side ball returns make ball retrieval easy and keeps the game fast
- 30" W x 56" L x 35" H



SCORER™ FOOSBALL

- Sturdy cabinet with a scratch-resistant laminate in a warm antique chestnut finish
- Brunswick exclusive humanistic counter-balanced men allow easier cross-court shots
- Melamine playfield with full-color logo
- Chrome-plated steel rods (120") resist bending and withstand abuse
- Four integral and removable rubber cup holders keep refreshments securely away from the playing surface
- Adjustable leg levelers
- 30" W x 56" L x 36" H



GAMES

DARTBOARD CABINET

The Brunswick dartboard cabinet is a great addition to any game room and provides the best solution for keeping your game organized and your walls protected. Its cabinet doors feature double chalk scoreboards, magnetic catches, chalk groove, and dart holders for storage. Features a cork backboard for steel-tip darts. Cabinet holds most steel- and soft-tip darts. Constructed of hardwood and hardwood veneers with antique bronze hinges and cabinet door knobs. Offered in chestnut and espresso finishes. Cabinet dimensions are 37" x 30½" x 7½". Dartboard and darts not included.



Shown in Espresso



Shown in Chestnut



Shown in Espresso

SHUFFLEBOARD BOWLING PIN

Turn one classic game into two with Brunswick's Shuffleboard Pins. Crafted out of solid rubberwood, this miniature bowling set includes a wooden rack for easy set-up and 10 matching pins – adding whole new level of competition to your shuffleboard table.



GAME ROOM FURNITURE

NEWBURY™ GAME TABLE AND CHAIRS

There are exceptionally designed game tables and then there are custom-crafted pieces of furniture that command attention in any room. We put both of those components together to create the Newbury game table. Featured design elements include handcrafted herringbone detail, antique distressed finish, custom iron hardware, and a table center of top grain buffalo hide. The Newbury game table comes complete with eight inset drink coasters, eight leather inset drink slides, and reversible counter holders that may be stored upside down when not in use. Impeccable attention to detail makes the Newbury game table a true complement to any game room or living space.

Crafted with the same sophisticated style and detail as the Newbury game table, the Newbury game chair provides the perfect spot to settle in for hours of relaxing playing time. Featuring a comfortable wide seat covered in supple European snuff top grain cow hide, you'll appreciate the handcrafted herringbone pattern, hand-distressed finish, custom iron hardware, and upholstery tack detail.

The Newbury game table and chairs are part of our exquisite Newbury Collection, which also includes the Newbury pool table and shuffleboard table—everything you need to make your game room the number one entertainment destination for family and friends.



Leather inset drink slides pull out



Reversible counter holders may be stored upside down



GAME ROOM FURNITURE

HERITAGE™ GAME TABLE AND CHAIRS

Add casual elegance to your game room. This solid wood table and chairs, with chestnut or espresso finish veneers, features a man-made spill resistant playing surface, generous chip holders, deep beverage coasters, and an under-table storage area for gaming accessories. When not in use for gaming, just turn the top over for additional dining space.



Shown in Espresso



Built-in chip holders and beverage coasters

HERITAGE™ TEXAS HOLD 'EM TABLE

Especially designed to maximize your Texas Hold 'Em fun, this durable table features solid wood construction with chestnut or espresso finish veneers. You'll appreciate the man-made, spill resistant trim and black cloth playing surface as well as the sturdy double pedestal legs. When you're not using the gaming surface, just flip the top and you'll enjoy the convenience of an extra dining table.



Shown in Espresso



Enjoy the convenience of an extra dining table by flipping the top

GAME ROOM FURNITURE

BRUNSWICK CENTENNIAL™ GAME TABLE CHAIR

The Centennial game table chair reclines, swivels, and adjusts in height. This solid wood chair pairs nicely with the Heritage game table and Heritage Texas Hold 'Em table. Available in traditional cherry and chestnut finishes.



Shown in Traditional Cherry



Shown in Chestnut

BRUNSWICK CENTENNIAL™ BACK BAR

The traditionally styled Centennial Back Bar is a nice complement to other Brunswick game room furniture. Features include beveled mirror, wine glass rack, bottle storage, one large center drawer, and two small outside drawers. Overall dimensions are 58" W x 40" H x 10" D. Available in chestnut finish. Features the standard Brunswick wall mounting system.



Shown in Chestnut



Large center drawer, and two small outside drawers for convenient storage.

BRUNSWICK CENTENNIAL™ BAR

Features beautiful hand-inlays emblematic of turn-of-the-century design. Each classic cabinet is paired with its own distinctive inlaid wood veneer and inlaid ebony striping. Each bar features refrigerator cavity with removable shelving, two wine chillers, lockable cabinet with adjustable shelf, space for six bottles of wine, ceramic cutting board, glassware rack, dry sink, and 77" laminate bar top for carefree maintenance and durability. Overall dimensions are 77" W x 42" H x 34" D. Available in traditional cherry finish with antique brass footrail hardware.



GAME ROOM FURNITURE

BRUNSWICK CENTENNIAL™ BAR STOOL

The traditional styling of this bar stool blends well with your favorite billiard table and furniture. Features include swivel mechanism that allows for easy side-to-side movement, seat height of 30", and brushed nickel footplates. Available in traditional cherry, chestnut, and espresso finishes. Matches Centennial bar (see page 49).



Shown in Espresso



Shown in Chestnut



Shown in Traditional Cherry

BRUNSWICK HERITAGE™ BAR STOOLS

Three chair options designed to match your bar, pub table, or billiard table:

Heritage Leather Back Bar Stool:

Rich and elegant looking, this bar stool offers unparalleled comfort.

Heritage Wood-Slat Back Bar Stool:

A traditionally styled bar stool, guaranteed to blend in any game room setting.

Both bar stools feature a Trendler™ brand swivel mechanism and brushed nickel footplates. Seat height measures 30". Available in traditional cherry, chestnut, and espresso finishes.

Heritage Wood Back Bar Stool:

Designed to match the Heritage game table and chair set. Made of hardwood plus veneer and available in chestnut or espresso finishes. Sold as a set of two.



Shown in Chestnut



Shown in Traditional Cherry



Shown in Espresso

CONTENDER COLONIAL™ BACKLESS BAR STOOL

Designed to complement your pub table, bar, or billiard table. Constructed from solid wood with a seat that swivels. Brushed nickel footplates are included. Available in chestnut, traditional cherry, matte black, and espresso finishes.



Shown in Chestnut



Shown in Traditional Cherry



Shown in Matte Black



Shown in Espresso

GAME ROOM FURNITURE

BRUNSWICK CENTENNIAL™ PUB TABLE

Features a reversible flip top—one side offers a chess/checkers inlay and the other side an inlay similar to the Centennial™ Game Table. Beneath the play surface is a 2½" deep storage area for all of your gaming accessories. Octagonal table top is 36" with a solid wood pedestal and base. Chess and checker gaming pieces included. Available in chestnut and traditional cherry finishes.



Shown in Chestnut



Game table top shown in Traditional Cherry



Storage area shown in Chestnut

BRUNSWICK HERITAGE™ PUB TABLE

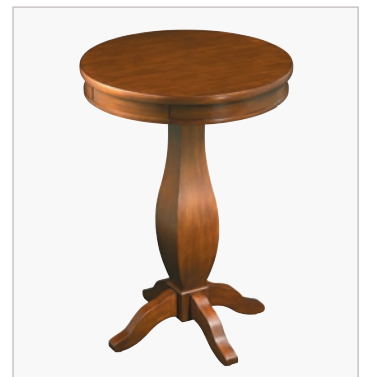
Features a 30" round table top with a solid wood pedestal and base and a 2" deep drawer perfect for storing Brunswick accessories. Available in chestnut and espresso finishes.



Shown in Espresso



Storage area shown in Espresso



Shown in Chestnut

GAME ROOM FURNITURE

CONTENDER COLONIAL™ CORNER PUB SHELF

Add a touch of ingenuity to your game room with this space-saving corner shelf. Measures 18" D. Includes four notches to hold cues. Available in traditional cherry, espresso, and chestnut veneer.



Shown in Espresso



Shown in Chestnut



Shown in Traditional Cherry

CONTENDER COLONIAL™ HALF-ROUND PUB SHELF

A beautiful design that provides a convenient place to set down a drink or snack without taking up floor space. Measures 30" W x 15" D. Includes two notches to hold cues. Available in traditional cherry, espresso, and chestnut veneer.



Shown in Chestnut



Shown in Espresso



Shown in Traditional Cherry



GAME ROOM FURNITURE

BRUNSWICK PLAYER'S CHAIR

A beautiful reproduction of a Brunswick chair from 1923. Designed to complement all billiard rooms, the player's chair adds class and elegance to any home. Features include comfortable pin-nailed seat cushion, hidden storage drawer, two cue notches and two cup holders in the armrests, and foot rest with black protector. Offered in traditional cherry, chestnut, and espresso finishes.



Shown in Espresso



Shown in Chestnut



Shown in Traditional Cherry

CONTENDER PLAYER'S CHAIR

Take a seat while your opponent tries to run the table. Featuring a plush seat and back, a drink coaster built into one arm and cue holder in the other, the Contender Player's Chair is the perfect place to wait your turn. You'll sit high enough to see all the action with its 26½" seat height. Offered in a beautiful chestnut finish.



Shown in Chestnut



Recessed drink coaster



Notched cue holder

ACCESSORIES

POOL TABLE DINING TOP

Maximize your space and your home entertainment options by easily converting your Brunswick pool table into a generous buffet or elegant dining table. This traditionally styled, four-piece, wooden Dining Top is simple to install and suitable for most eight-foot pool tables. The Dining Top measures 106" x 60" and is available in chestnut or espresso finish.

The Dining Top fits the following eight-foot Brunswick and CONTENDER tables:

Acton	Genesis
Allenton	Glenwood
Artisan	Highlander
Ashbee	Kendrick
Astoria	Kingston
Barrington	Marquette
Bayfield	Mission
Black Wolf	Oakland
Bridgeport	Park Falls
Brixton	Providence
Camden	Sheldon
Centurion	Sorrento
Conrad	Sutton
Cromwell	Tremont
Danbury	Westcott



Storage bags available to safely store dining top sections. Sold separately.

When your dining top sections are not in use, you can safely store them with a dining top storage set. Made from durable 100% polyester denier, these bags feature a Velcro close top. Four bags are included, one for each section of the Dining Top. Storage set sold separately.

POOL TABLE COVER

Man-made leather, available in black or brown, with a 34" wide embossed Brunswick logo. Available in Standard to fit standard seven-, eight-, and nine-foot size billiard tables; Square Corner to fit square corner eight- and nine-foot size enclosed pocket billiard tables; and V-Corner to fit commercial design billiard tables. Custom sizes available through special order.



Standard Pool Table Cover in Black



Embossed detail of Brunswick logo in Black



Standard Pool Table Cover in Brown



Embossed detail of Brunswick logo in Brown

ACCESSORIES

CT7 TABLE TENNIS CONVERSION TOP

Features a durable foam pad backed top and measures 54" W x 92¼" L. Black finish with Brunswick Billiards brand. Fits seven-foot Brunswick pool or Air Hockey tables and includes paddles, balls, and clip-on net.



CT8 TABLE TENNIS CONVERSION TOP

The friendly competition never ends with this durable, foam pad-backed table tennis conversion top. Featured in a stylish black finish with Brunswick brand it includes everything you need to become the next neighborhood champ, including paddles, balls and clip-on net. This game top from Brunswick is manufactured to meet California's formaldehyde emissions regulations. Fits eight-foot Brunswick pool tables.



TABLE TENNIS CONVERSION TOP CADDY

This space saving caddy is ideal for storing Brunswick table tennis Conversion tops when not in use. Compact with a contemporary black finish and sturdy black castor wheels allowing for easy mobility. Compatible with both the Brunswick CT7 table tennis conversion top and the CT8 table tennis conversion top.



Rolls for convenient moving and storage.

ACCESSORIES



9-BALL RACK

The nine ball rack is constructed of UV coated solid maple, with reinforced corners and dowel peg joinery.

BIG BREAK® RACK

Constructed of UV coated solid maple, with reinforced corners and dowel peg joinery the Big Break rack is engineered to give you a tight fit for those breaks that count.

BCA RULE BOOK

The official rules of the Billiard Congress of America. World standardized rules for 8-Ball, 9-Ball, 14.1, One Pocket, and many other popular games. Also included are BCA Hall of Fame biographies, tournament results and records, and instructional tips.



ACCESSORIES



BILLIARD CHALK 12-PIECE, BLUE

While deep in color, this chalk is lightly pigmented. It is manufactured from the finest velvet-grade silica, ensuring maximum adherence and friction qualities.



BLUE DIAMOND CUE TIPS

Brunswick Billiards Blue Diamond cue tips are made from specially selected and treated leather and are infused with chalk. This creates a firm compressed cue tip for superb performance and playability time and time again.



SOLID BRASS BRIDGEHEAD

The heavy-duty forged brass bridge head has wide slots for better cue control, rubber footings for stability, and it self-screws onto the bridge cue.



GETTING STARTED INSTRUCTIONAL DVD

Getting Started DVD starring Ewa Mataya Laurance, a Brunswick Billiards exclusive! This DVD, starring Hall of Fame member Ewa Mataya Laurance, is jammed packed with exceptional information designed to get you started playing pool the right way. Includes information on the history of the game, caring for your billiard equipment and table, the fundamentals of how-to-play, game rules, practice drills and trick shots. This instructional DVD is a must have for all new and veteran players.



TWO-PIECE BRIDGE STICK

Two piece bridge stick. Solid brass bridgehead sold separately.



TWO PIECE 48 INCH CUE

This 48" cue is perfect for those shots in tight corners or for those times you need the control and balance of a short cue.



BRUNSWICK JUNIOR CUE

Help young beginners have fun and gain confidence while they learn the game. This unique, one-piece, 38" junior cue features an attached cue ball, so even first-timers can succeed. Perfectly scaled and built with the same high quality materials and craftsmanship as our standard cues.

ACCESSORIES

CENTENNIAL™ PLAY PACKAGE

Featuring our premium billiard accessories, this set includes everything you need to play the game. Contents include:

- “Getting Started” instructional DVD
- Centennial® pocket balls
- Four Centennial® cues
- Two-piece short cue
- Two-piece bridge stick
- Brass bridge head
- Big Break® rack
- Nine-ball rack
- Table brush
- Twelve pieces of chalk
- Official BCA Rule Book



HERITAGE™ PLAY PACKAGE

The Heritage package includes:

- Heritage® pocket balls
- Four Heritage® cues
- Two-piece short cue
- Two-piece bridge stick
- Brass bridge head
- Big Break® rack
- Table brush
- Twelve pieces of chalk
- Official BCA Rule Book



CONTENDER® PLAY PACKAGE

The Contender package includes:

- Set of standard billiard balls
- Four 58" Contender® two-piece cues
- Two-piece bridge stick
- Plastic Bridge head
- 8-ball rack
- Plastic table brush
- Twelve pieces of chalk



ACCESSORIES



CENTENNIAL® POCKET BALLS PREMIUM EDITION

Ground and polished for absolutely true and accurate roll. Constructed of 100% phenolic resin for uniform density. Centennial balls are ground and polished to radial tolerances of 0.001 of an inch. These balls represent the standard of excellence in the billiards industry.



HERITAGE® POCKET BALLS

Heritage® pocket balls are designed for daily use. Made with high quality phenolic resin, Heritage balls are ground and polished to radial tolerances of 0.003 of an inch, for accurate, reliable performance.

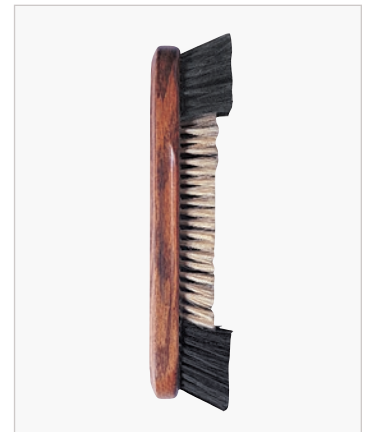
BILLIARD BALL POLISH

Keep your balls playing their best with Brunswick Billiard Ball Polish and Cleaner. Formulated specifically for phenolic resin balls to keep them clean, polished and static free.



NATURAL HAIR TABLE BRUSH

Features naturally resilient hair bristles that are gentle on your billiard cloth and designed to reach hard to get areas such as under your table cushions.



BRIGHT PINK® IS AWARENESS IN ACTION™



BRIGHT PINK® IS AWARENESS IN ACTION™

Bright Pink is the only national non-profit organization focused on the prevention and early detection of breast and ovarian cancer in young women. Brunswick Billiards is proud to sponsor Bright Pink! We have designed three Limited Edition Bright Pink products. A portion of the proceeds from each purchase will benefit Bright Pink's breast and ovarian health education and support programs, offered free of charge to women nationwide.

SMASH 7.0 BP LIMITED EDITION TABLE TENNIS TABLE

The Bright Pink Limited Edition SMASH 7.0 BP Table Tennis Table lets you show your support in a big way! This best-selling table is as brilliant and bright as the cause it stands for.

\$50 of this purchase will benefit Bright Pink. Learn more at BRIGHTPINK.ORG.



SMOKE SERIES AR1 BP LIMITED EDITION CUE

Our signature Smoke Series cue has been transformed into a Cue for a Cause! The Bright Pink Limited Edition Smoke Series AR1 BP cue will help create bold shots, and a great cause!

\$10 of this purchase will benefit Bright Pink. Learn more at BRIGHTPINK.ORG.



SMOKE SERIES SC2 BP LIMITED EDITION CUE

Our signature Smoke Series cue has been transformed into a Cue for a Cause! The Bright Pink Limited Edition Smoke Series SC2 BP cue will help create bold shots — and the user — shine even brighter!

\$10 of this purchase will benefit Bright Pink. Learn more at BRIGHTPINK.ORG.





THE BEST IN THE WORLD CHOOSE THE BEST IN THE WORLD WORLD CHAMPION EWA MATAYA LAURANCE PREFERS BRUNSWICK

Ewa Mataya Laurance is one of the most visible superstars in the history of pocket billiards. Known as The Striking Viking, she took the billiard world by storm after moving to the United States from her native Sweden.

Following her childhood dream of becoming the best in the world, she continues to be a dominant presence on the international billiard scene. Ewa is the current International and World Cup Trick Shot Champion, the holder of multiple World and U.S. Open 9-ball titles, and has also won the Swedish, European, and U.S. National Championships in her incredible career. A former number one ranked player in the world, Ewa has received Player of the Year honors, been named WPBA Sports Person of the Year, and in 2004, was inducted into the prestigious Billiard Congress of America Hall of Fame.

Not only a superior billiards player, Ewa has a wonderful sense of humor, loves horses, and is one of the friendliest people you'll ever meet. See amazing Ewa trick shots on our blog, and even ask her questions about the game at our new "Ask Ewa" feature. Visit BRUNSWICKGAMEON.COM.

“My endorsement of Brunswick as a player has always been easy, I represent the best table in the world, so I have never been put in a position where I have to stretch the truth or exaggerate. It’s that simple.”

— Ewa Mataya Laurance



Visit STRIKINGVIKING.COM to learn more about Ewa's incredible career.

ROOM SIZE CHART

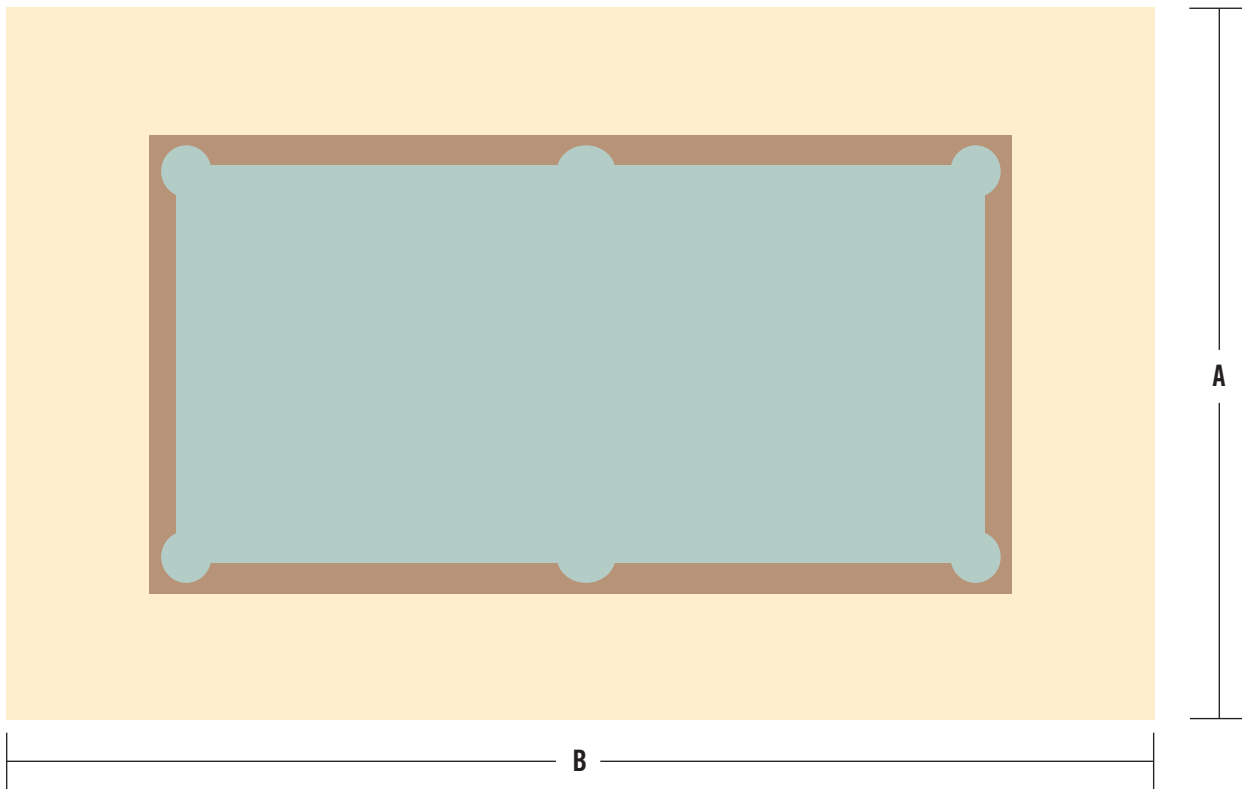
MINIMUM SPACE REQUIREMENTS

Use the chart to determine the room size needed for a particular pool table and cue combination.

Seven-foot table: 3' 6" x 7' (Playing area: 38" x 76") | 13' (A) x 16' (B)

Eight-foot table: 4' x 8' (Playing area: 44" x 88") | 13' 6" (A) x 17' (B)

Nine-foot table: 4' 6" x 9' (Playing area: 50" x 100") | 14' (A) x 18' (B)



VISIT BRUNSWICKBILLIARDS.COM FOR GAME ROOM INSPIRATION.

BRUNSWICK LIFETIME WARRANTY

Every Brunswick table is a timeless tribute to excellence in design and workmanship. Proud to stand behind every product that carries the Brunswick name, Brunswick tables are guaranteed for a lifetime.

Please read all terms and conditions of the warranty. Brunswick reserves the right to change specifications without notice.



BRUNSWICK CERTIFIED SLATE

Demonstrating our enduring commitment to superior performance, Brunswick meets or exceeds all Billiard Congress of America slate specifications. Diamond honed and stringently tested, Brunswick slate is certified for quality and comes with a lifetime warranty.



Different wood species offer unique texture and grain, as well as natural beauty. Minor variations in finish color may occur due to the natural characteristics of the wood. Photos may not be an accurate reflection of the product due to lighting conditions.



Connecting Generations through Superior Craftsmanship and Innovation Since 1845



SCAN THE QR CODE FOR ONLINE
ACCESS TO GREAT BRUNSWICK
BILLIARDS PRODUCTS!



8663 196TH AVE. • BRISTOL, WI 53104 • 1-800-336-8764
VISIT US AT: BRUNSWICKBILLIARDS.COM



FOR VALUABLE BILLIARDS
RESOURCES VISIT OUR BLOG:
BRUNSWICKGAMEON.COM

CONNECT WITH US:



©2015 BRUNSWICK BILLIARDS, INC.